

turnately long 330 ft

this Blk. setting stakes at

the 3 other  $\perp$  lines of

Repeated this operation on

long 330

Plot B angle 90° - RT north  $\nabla$  at stakes

4 Plot F P.S. S.E. Cor Lot 1 Blk 5

thence just over S.E. Cor Lot 1 Blk 5

for diagram

Staked out sets allays & corners as

thence retraced this line East &

checked for distance between them

with these hubs with tacks, in turn)

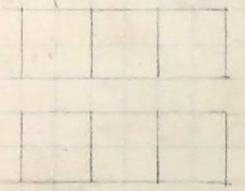
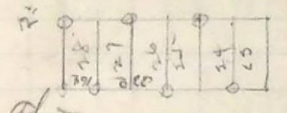
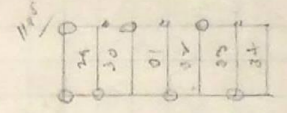
P.S. S.W. Cor Lot 1 Blk 6 (found

Just over the S.E. Cor Lot 1 Blk 5

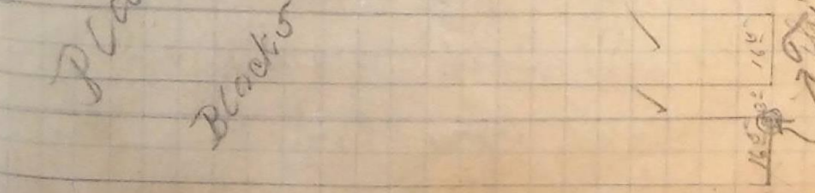
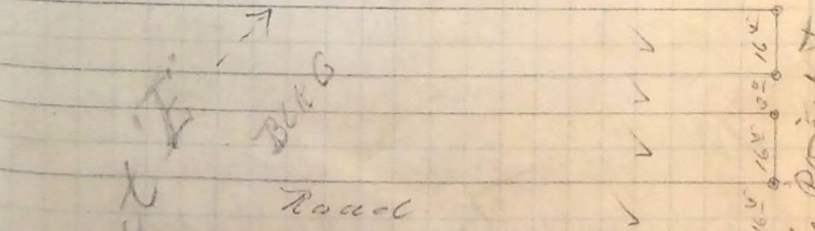
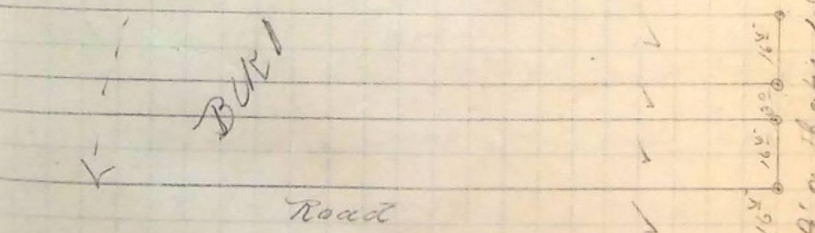
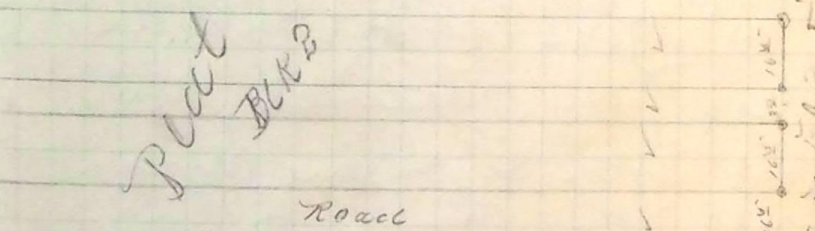
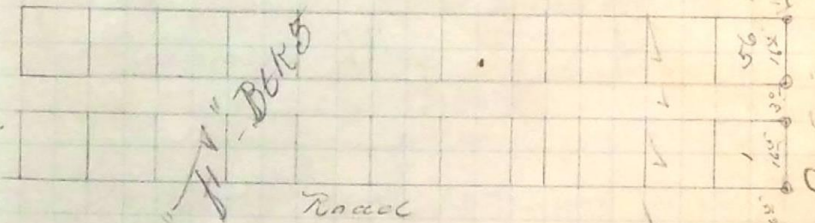
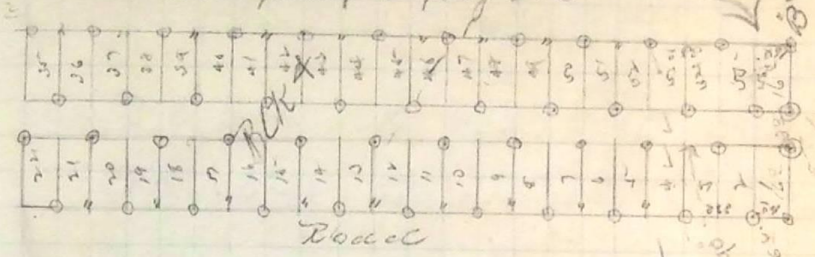
City Cemetery for Garden City

Survey of Blk 4 & 5 Plot F

Monday Am. May 26<sup>th</sup> 1890



see point B page 16



→ 00 A

This point & A on page 15 is identical